

## sureanalysis™ Software Installation for MGI GPS Series

---

**CAUTION:** your **MGI GPS Series™** remote control **MUST NOT BE CONNECTED** to your computer until after installation of the sureanalysis™ software.

---

**Important Note:** sureanalysis™ requires Microsoft's .Net Framework to be installed on your computer. During installation .Net will be installed if the installer determines that the .Net framework is not installed.

**Important Note:** sureanalysis™ is only supported on Windows 2000, XP and Vista operating systems.

To install sureanalysis™ follow the steps below:

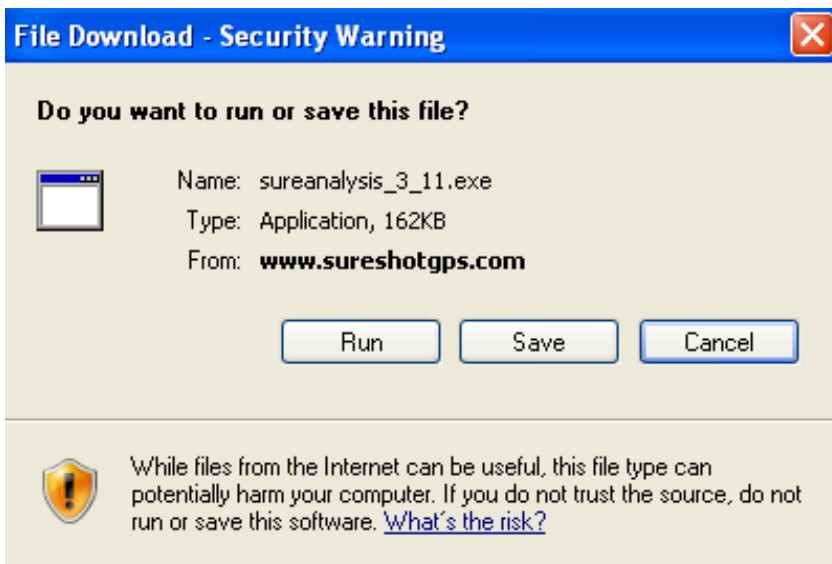
1. Please click on the '**Register**' button on the MGI website.



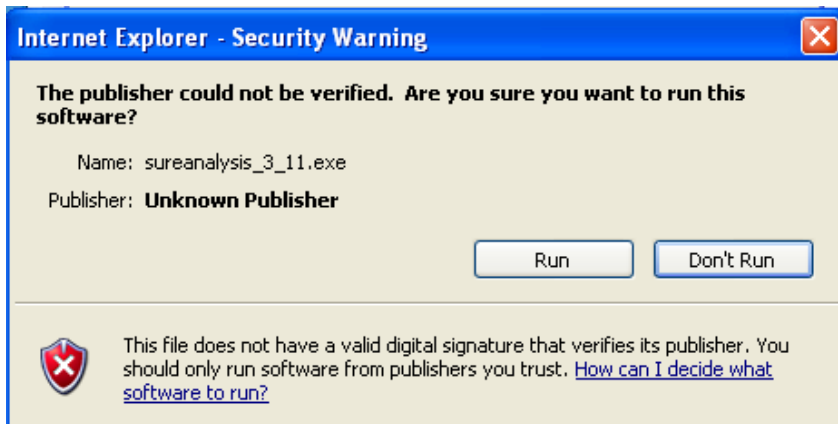
2. Click on the 'Download Software' button.



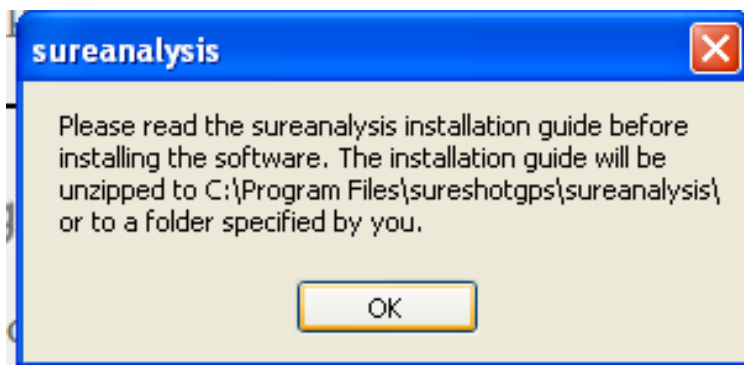
3. You will see the screen below. Please click 'Run'.



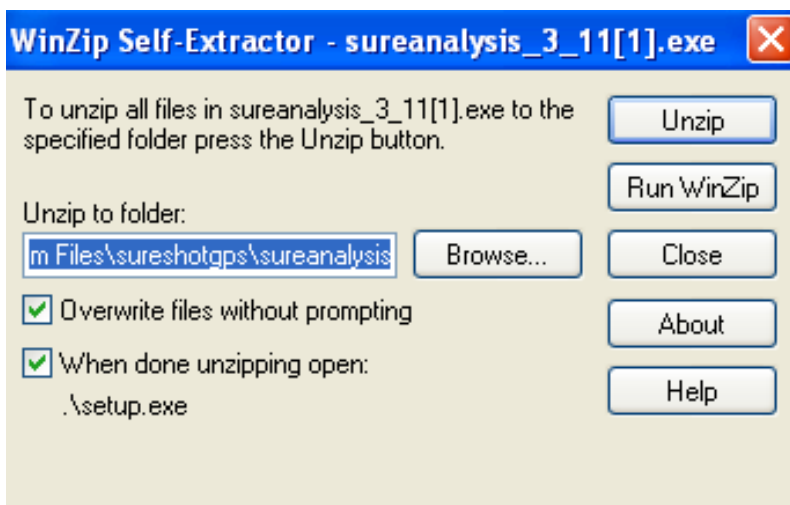
- You will then see the following security message. This is a automatic message that will pop-up on all software that is not created by Microsoft. Please click '**Run**'.



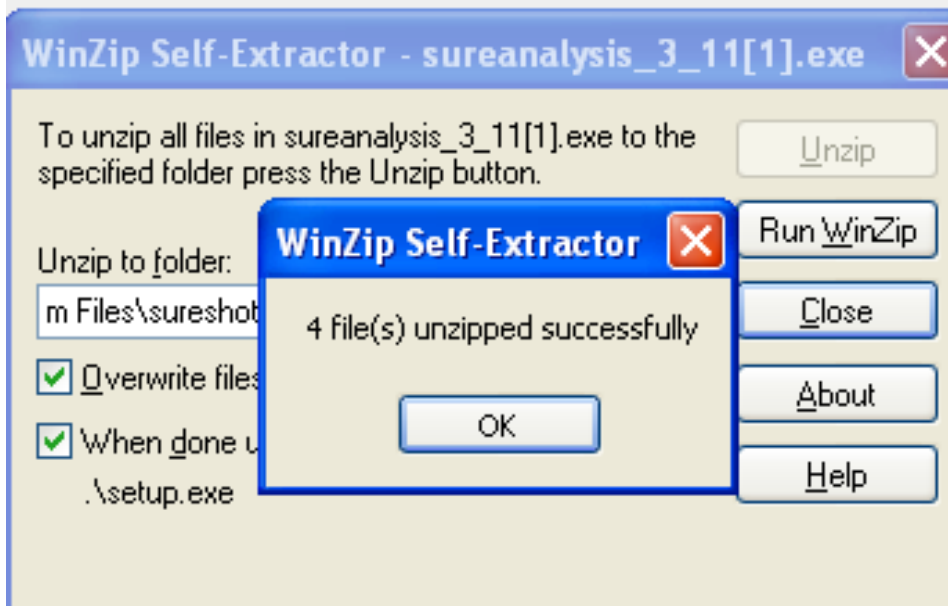
- Please Read the installation guide and click '**OK**'.



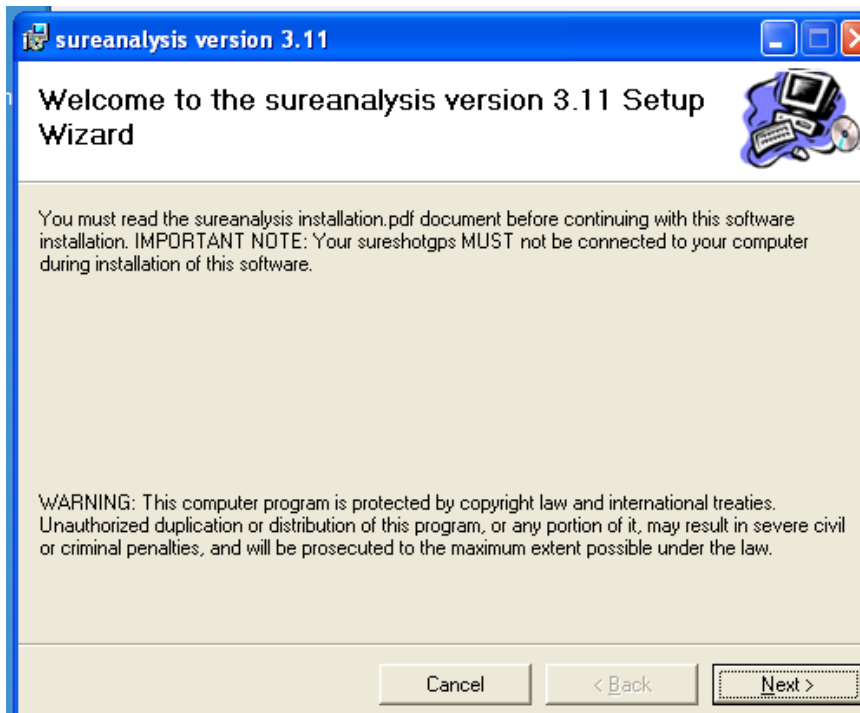
- Click '**Unzip**'.



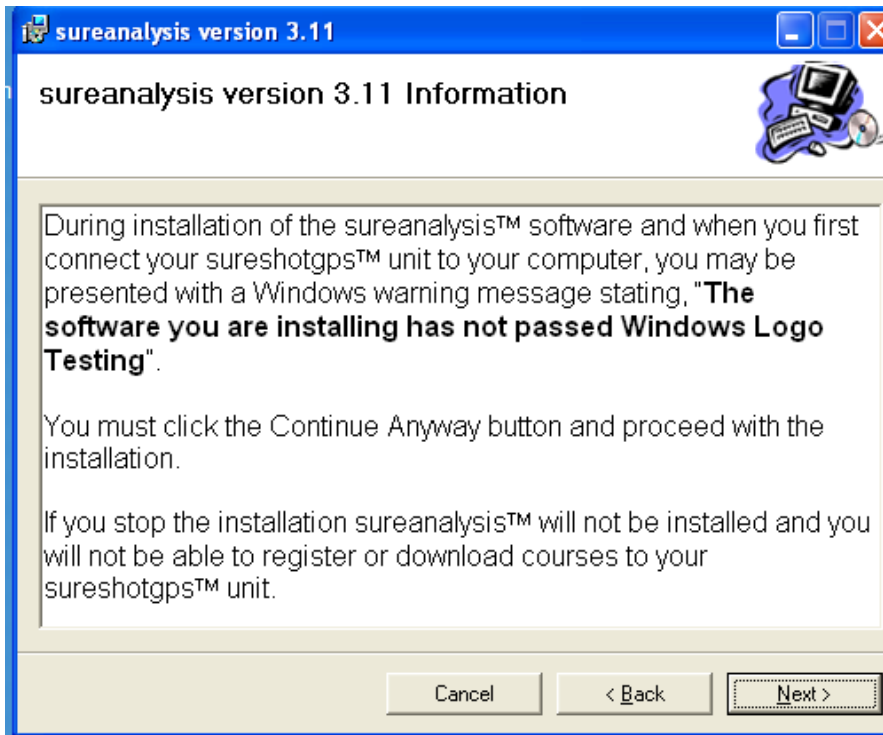
7. Click 'OK'.



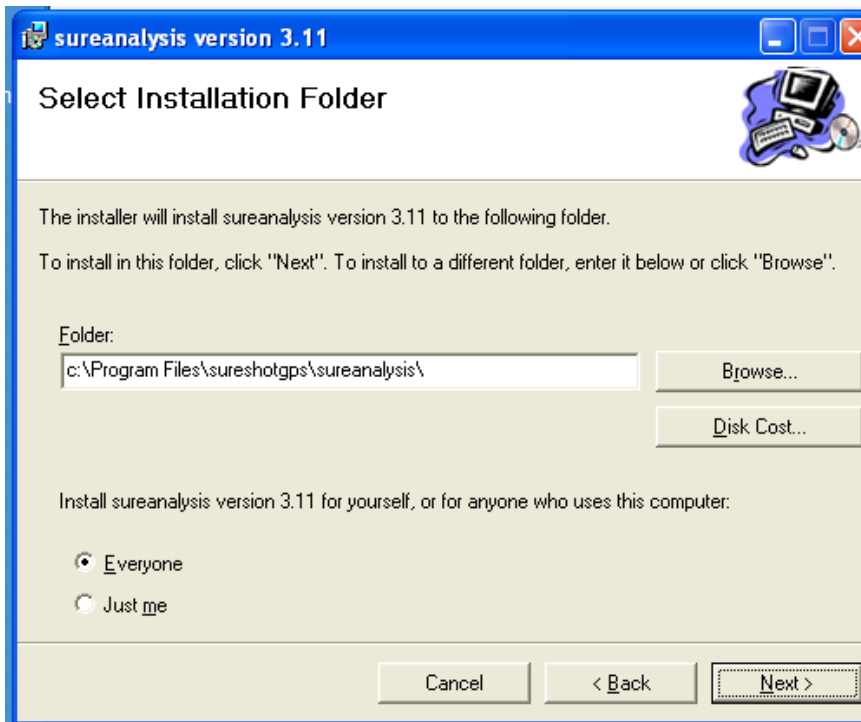
8. The following screen will appear. Please click 'Next'.



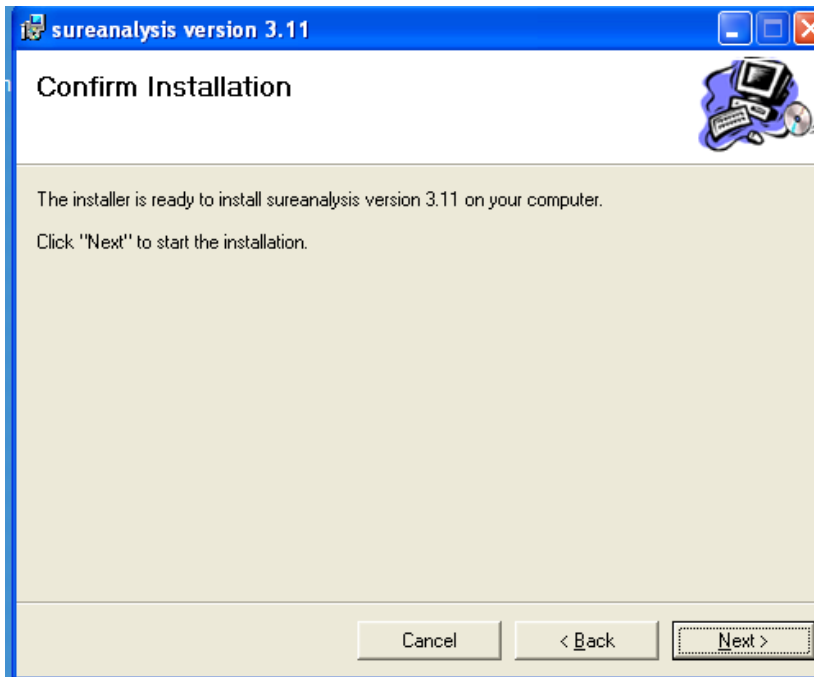
9. The following Information will appear. Please read and then click 'Next'.



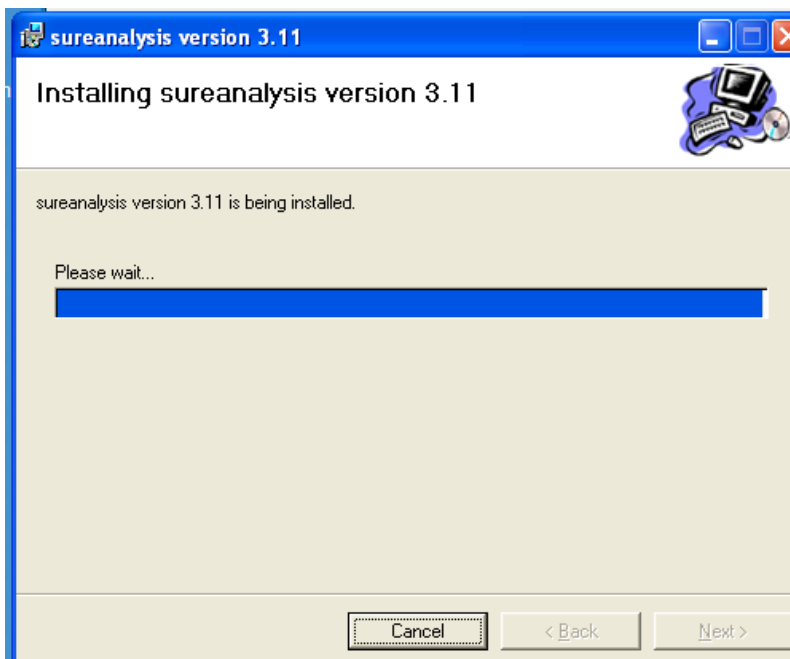
10. Accept the default folder by clicking 'Next'.



11. You will be asked to confirm installation. Confirm by clicking '**Next**'.



12. Sureanalysis will install.



13. When this is completed, please click '**Close**' to exit. Sureanalysis is now installed.

